

# An Introduction to Slurs on Trombone

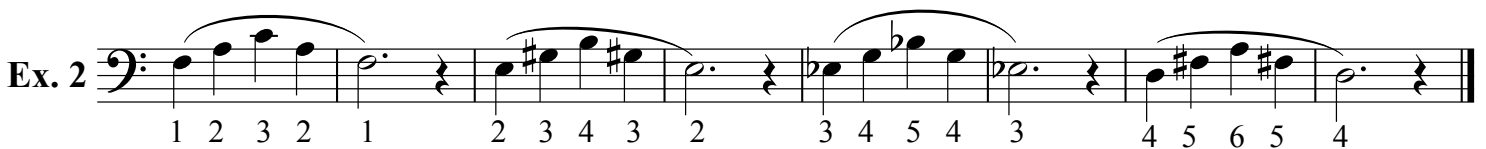
Slurs are added to music to make the melody sound smooth. For most band instruments, this smooth sound is achieved by using air to connect the notes without using your tongue. However, the trombone slide makes it slightly more challenging to perform slurred music. On the trombone, there are two ways to perform slurs: some slurs are performed without any tonguing and some require a light "do" articulation. All types of slurs must be performed with a steady, energetic air stream.

## Part 1: Slurs performed without the tongue

**Lip Slurs-** a slur that occurs when the slide remains in the same position, but the pitch changes.



**Natural Slurs-** a slur that occurs when the slide moves, but does not produce a glissando or "smear" sound. These slurs do NOT require tonguing.



## Part 2: Tongued Slurs

A slur that occurs when the slide moves and produces a glissando or "smear" when played without the tongue or when repeated pitches appear under a slur and need separation. These require a light "do" tongue at the beginning of the notes.

